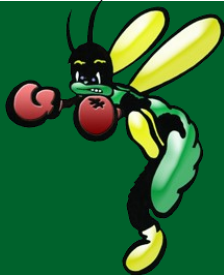


# Senior Newsletter

## GUIDANCE SERVICES



**DIRECTOR OF STUDENT PERSONNEL SERVICES:**

**Mrs. Tara Torres**

**GUIDANCE SPECIALIST:**

**Mr. William Pantale**

**SCHOOL COUNSELORS:**

**Mr. Kristofer Kohler**

**Mrs. Diana Pasquariello**

**Ms. Jennifer Shue**

**Mrs. Danielle Vigilante**

### COLLEGE APPLICATION PROCESS

**OVER 58% OF THE SENIOR CLASS HAS APPLIED TO COLLEGE! AMAZING JOB TO ALL WHO HAVE APPLIED! LET'S KEEP UP THE GOOD WORK AND KEEP THAT NUMBER GROWING!**

### LOCAL SCHOLARSHIPS

**LOCAL SCHOLARSHIPS WILL BE AVAILABLE FOR PICKUP IN THE GUIDANCE OFFICE STARTING IN EARLY FEBRUARY. MAKE SURE YOU LISTEN TO THE MORNING ANNOUNCEMENTS FOR DETAILS AND SEE YOUR COUNSELOR WITH ANY QUESTIONS!**

*(5.1) Janet Logan Daily Foundation—The Janet Logan Daily Foundation grants an annual award to one graduating high school senior from New Jersey who enrolls full-time in an accredited university or college within the United States. This scholarship rewards students from varying academic backgrounds who have routinely demonstrated maturity and integrity within and beyond the classroom. For details and application please visit <http://janetlogandailyfoundation.org/application.asp>*

*(5.2) NJREA—The NJREA is offering scholarships available to students applying to a 2 or 4 year college. Please see Mrs. Pasquariello for an application to see if you qualify.*

*(5.3) The American Society of Civil Engineers—The scholarship is being offered by the North Branch of the ASCE to encourage students to pursue a college degree in Civil Engineering. For details and application visit [ascenjb.org/home.html](http://ascenjb.org/home.html)*

*(5.3) Tzu Chi Foundation — This organization is pleased to announce its annual scholarship program for students with financial need and academic achievements open to all high school seniors. For details and application, visit <http://www.us.tzuchi.org>*

*(5.5) The Alliance Connections for the Future—Scholarships awarded to a graduating senior with disabilities from Passaic (and other) counties. Visit: [specialeducationalliancenj.org](http://specialeducationalliancenj.org) for application and criteria information*

*(5.6) Passaic County 200 Club—The Passaic County 200 Club is a non-profit, volunteer community organization that provides financial assistance to families of our fallen police, fire and EMT heroes and honors those who have distinguished themselves in the line of duty within Passaic County. Please see Mrs. Pasquariello for applications.*



**PASSAIC VALLEY** ★  
**REGIONAL HIGH SCHOOL** ★  
 Serving Little Falls, Totowa, & Woodland Park